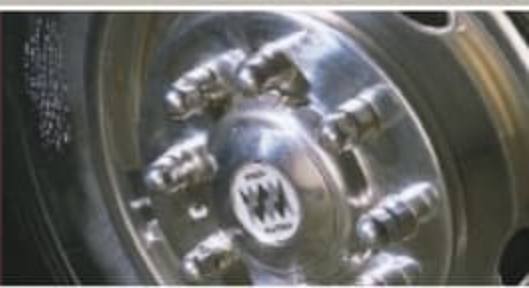


2002

# Monarch

by Monaco





2002

# Monarch

by Monaco







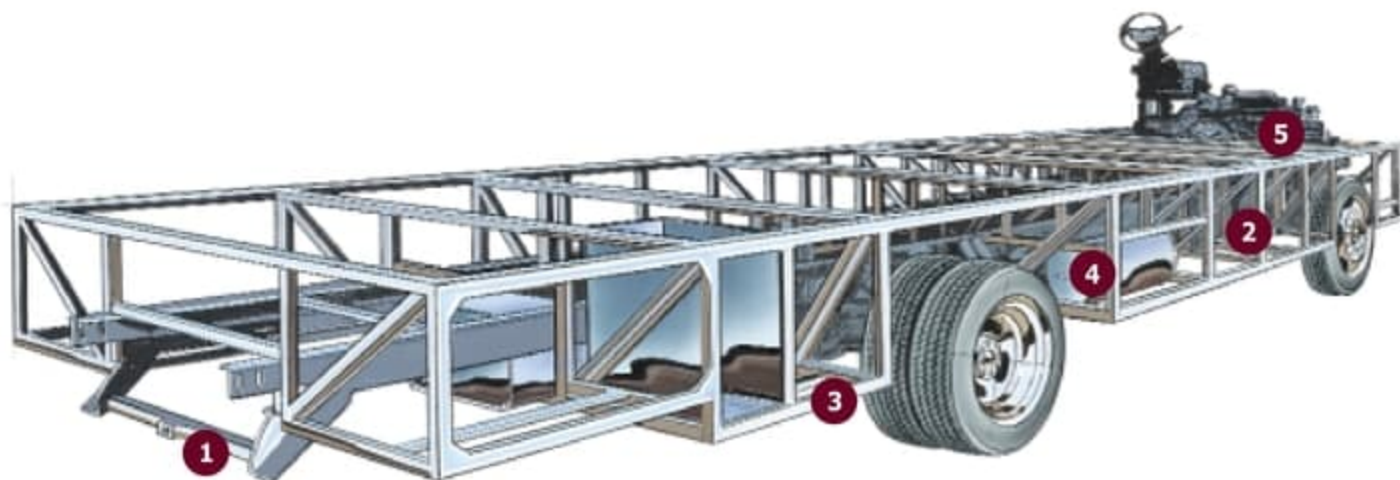






# Put your hands on it

feel the quality construction



The Roadmaster SmartStructure® provides superior strength, balance and weight distribution while enabling Monaco engineers to make maximum use of space. SmartStructure is fully integrated with your choice of Workhorse® or Ford® chassis.

1. A hitch receiver with six-point connector provides plentiful towing capacity.
2. The Roadmaster SmartStructure technology allows for more under-the-coach storage, including full pass-through storage bays.
3. The steel truss system has a low center of gravity that grounds the coach and provides a strong platform to carry your coach almost anywhere you want to go.
4. Propane tank, inverter, water heater and batteries are accessible for easy use and service.
5. Anti-lock brakes help you stay in control.



Layers and layers of sidewall protection:  
(left to right)

- Smooth aluminum side walls. (High gloss gel coat fiberglass is optional)
- Alumaframe C-channel uprights and interlocking cross members filled with one-and-a-half inch fiberglass insulation.
- Vapor barrier.
- Bead foam insulation.
- Custom interior paneling.

The roof structure consists of:  
(top to bottom)

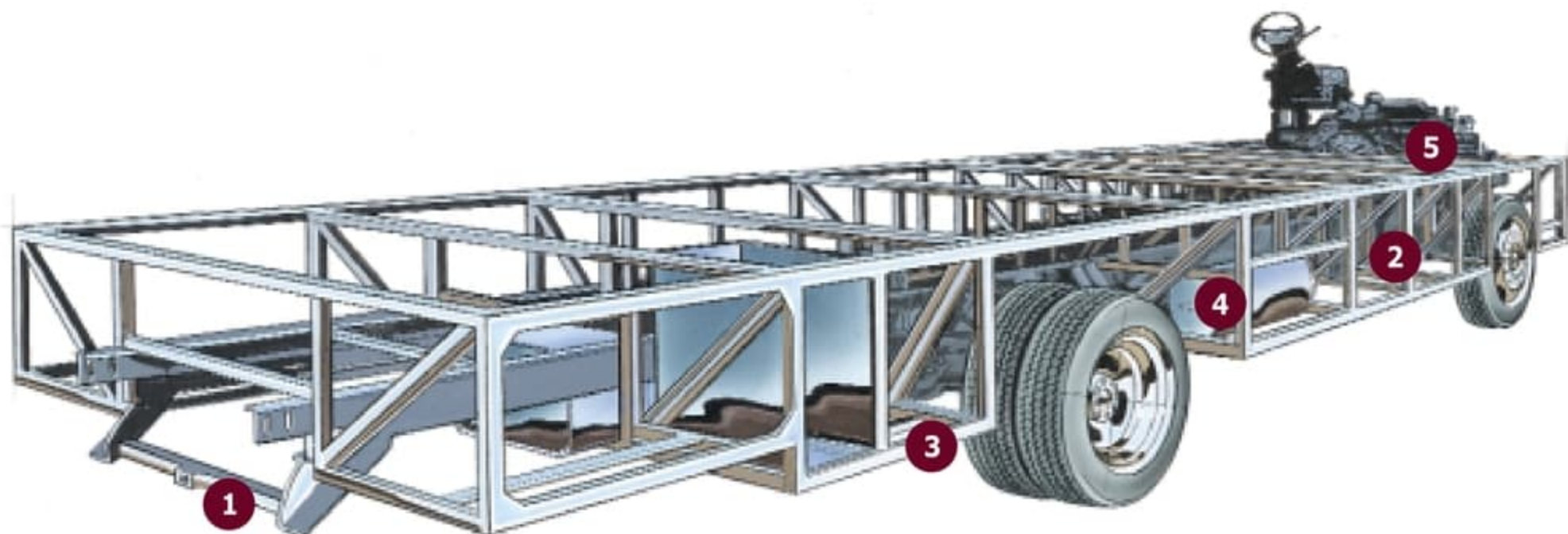
- Peaked aluminum roof.
- Luaun backing.
- Tapered bead foam two inches thick at center.
- Two-and-a-half inch thick aluminum I-beam superstructure filled with fiberglass insulation.
- Vapor barrier.
- Structure foam.
- Bead foam insulation.
- Soft foam padding for extra insulation and interior noise reduction.
- Padded vinyl ceiling.





# Put your hands on it

feel the quality construction



The Roadmaster SmartStructure® provides superior strength, balance and weight distribution while enabling Monaco engineers to make maximum use of space. SmartStructure is fully integrated with your choice of Workhorse® or Ford® chassis.

1. A hitch receiver with six-point connector provides plentiful towing capacity.
2. The Roadmaster SmartStructure technology allows for more under-the-coach storage, including full pass-through storage bays.
3. The steel truss system has a low center of gravity that grounds the coach and provides a strong platform to carry your coach almost anywhere you want to go.
4. Propane tank, inverter, water heater and batteries are accessible for easy use and service.
5. Anti-lock brakes help you stay in control.



Layers and layers of sidewall protection:  
(left to right)

- Smooth aluminum side walls. (High gloss gel coat fiberglass is optional)
- Alumaframe C-channel uprights and interlocking cross members filled with one-and-a-half inch fiberglass insulation.
- Vapor barrier.
- Bead foam insulation.
- Custom interior paneling.

The roof structure consists of:  
(top to bottom)

- Peaked aluminum roof.
- Luaun backing.
- Tapered bead foam two inches thick at center.
- Two-and-a-half inch thick aluminum I-beam superstructure filled with fiberglass insulation.
- Vapor barrier.
- Structure foam.
- Bead foam insulation.
- Soft foam padding for extra insulation and interior noise reduction.
- Padded vinyl ceiling.





# Specifications

## BODY CONSTRUCTION

Alumaframe Superstructure  
Steel Cage Cockpit Construction  
Peaked Aluminum Roof with Fiberglass Insulation  
Smooth Aluminum Sidewalls  
Front and Rear Molded Fiberglass Caps with Integrated Bumpers  
Large Curved Aerodynamic Windshield  
Steel Framed Floor  
Laminated Structurewood Flooring  
Interior Paneling with 3/4-inch Insulation  
Foam Insulated Underbelly with Luan Backer  
One-Piece Engine Access Door  
Power Heated Remote Mirrors  
Headlamps with Turn Signals  
Baggage Doors with Integrated Single Handle Latches  
One-Piece Polyethylene Pass-Through Storage Compartments with Cargo Nets  
Exterior Vinyl Graphics  
Mud Flaps  
Rear Ladder

### OPTIONS

Smooth Gelcoat Fiberglass Sidewalls

## COCKPIT

Fiberglass Automotive Dash  
CD Player/Radio with Four Speakers  
Multi-Positioned Sunvisors  
Rear Vision System Prep  
Intermittent Windshield Wipers  
Tilt/Telescopic Steering Wheel  
Electric Automotive Horn  
Cruise Control  
Power Steering  
Drink Holder  
Fabric Pilot and Co-Pilot Recliner Seats  
Carpeted Driver and Passenger Floor Mats  
Computer Laptop Workstation

### OPTIONS

Six-Way Power Pilot Seat  
Six-Way Power Co-Pilot Seat  
Rear Vision System

## CB Prep

## APPLIANCES AND ACCESSORIES

Large Double-Door Refrigerator  
High Output Three-Burner Cooktop with Oven (Option on 29W, 32PBD)  
Microwave with Touch Control (N/A: 30PBD, 36PBD)  
Range Hood with 12V Fan (N/A: 30PBD, 36PBD)  
Spacesaver Microwave (30PBD, 36PBD)  
25-inch Stereo Color TV with Remote in Living Area  
TV Antenna and Booster with TV Jacks  
VCR Prep with Video Switching Box  
Cable TV Hook-Up and Telephone Jacks

### OPTIONS

Large Double Door Refrigerator with Ice Maker  
Four-Door Refrigerator with Ice Maker (N/A: 29W, 30PBD, 32PBD)  
Recessed High Output Three-Burner Cooktop (w/o Oven) (Std. on 29W, 32PBD)  
Convection Microwave with Touch Control (N/A: 30PBD, 36PBD)  
Spacesaver Convection Microwave (30PBD, 36PBD)  
Stereo TV Wired through Ceiling Speakers  
13-inch Color TV with Remote in Bedroom  
AM/FM Stereo Cassette (deletes CD Player)  
VCR  
Washer/Dryer Prep with 10 Gal. Water Heater (N/A: 29W, 30PBD, 34SBD, 34PBD) (Requires 50 Amp Service Opt.)  
Vented Combination Washer/Dryer (N/A: 29W, 30PBD, 34SBD, 34PBD) (Requires Washer/Dryer Prep & 50 Amp Service Option)  
Digital Satellite System Prep  
Exterior Entertainment Center (Speakers, AM/FM Radio/CD Player)

## INTERIOR

Western Oak Cabinetry  
Raised Panel Hardwood Cabinet Doors  
Teleshut Overhead Storage Doors and Positive Catches on All Other Doors  
Low Friction Roller Drawer Guides  
Brass Finished Cabinet Hardware  
Laminate Kitchen Countertops with Stainless Steel Sink and Two Sink Covers  
Kitchen Countertop Extension (29W, 34PBD, 36PBD, 36PED)  
Kitchen Pantry with Adjustable Shelves (N/A: 29W, 30PBD)  
Booth Dinette with Drawers  
Linoleum Flooring in Kitchen (N/A: 30PBD, 36PBD)  
Nylon Carpeting in Kitchen (30PBD, 36PBD)  
Linoleum Flooring in Bathroom  
Nylon Carpeting and Pad in Living Area and Bedroom  
Padded Vinyl Ceiling  
Oak and Brass Entry Rail with Free-Standing Dinette Option  
Large Overhead Cabinets in Kitchen and Bedroom Slide-Outs  
Laminate Bathroom Countertop Bath-and-a-Half (36DBD) (Plank Floor Std. in Rear Bath)  
One-Piece Fiberglass Shower  
Glass Shower Door with Brass Frame  
Medicine Cabinet with Shelves  
Bathroom Mirror  
Towel Bars in Bathroom  
Decorative Mirror on Rear Wall (32PBD, 34PBD, 34SBD, 36PBD)  
Queen Bed  
Bedsprad with Pillows  
Mini Blinds Throughout  
Party Table between Co-Pilot Seat and Barrel Chair (N/A: 29W, 30PBD, 32PBD)  
Fabric Barrel Chair (N/A: 29W, 30PBD)  
Sleeper Sofa (N/A: 32PBD, 34SBD, 36WDD, 36DBD)  
Hide-A-Bed Sofa (32PBD, 34SBD, 36WDD, 36DBD)

### OPTIONS



# Specifications

## BODY CONSTRUCTION

Alumaframe Superstructure  
Steel Cage Cockpit Construction  
Peaked Aluminum Roof with Fiberglass Insulation  
Smooth Aluminum Sidewalls  
Front and Rear Molded Fiberglass Caps with Integrated Bumpers  
Large Curved Aerodynamic Windshield  
Steel Framed Floor  
Laminated Structurewood Flooring  
Interior Paneling with 3/4-inch Insulation  
Foam Insulated Underbelly with Luan Backer  
One-Piece Engine Access Door  
Power Heated Remote Mirrors  
Headlamps with Turn Signals  
Baggage Doors with Integrated Single Handle Latches  
One-Piece Polyethylene Pass-Through Storage Compartments with Cargo Nets  
Exterior Vinyl Graphics  
Mud Flaps  
Rear Ladder

### OPTIONS

Smooth Gelcoat Fiberglass Sidewalls

## COCKPIT

Fiberglass Automotive Dash  
CD Player/Radio with Four Speakers  
Multi-Positioned Sunvisors  
Rear Vision System Prep  
Intermittent Windshield Wipers  
Tilt/Telescopic Steering Wheel  
Electric Automotive Horn  
Cruise Control  
Power Steering  
Drink Holder  
Fabric Pilot and Co-Pilot Recliner Seats  
Carpeted Driver and Passenger Floor Mats  
Computer Laptop Workstation

### OPTIONS

Six-Way Power Pilot Seat  
Six-Way Power Co-Pilot Seat  
Rear Vision System

CB Prep

## APPLIANCES AND ACCESSORIES

Large Double-Door Refrigerator  
High Output Three-Burner Cooktop with Oven (Option on 29W, 32PBD)  
Microwave with Touch Control (N/A: 30PBD, 36PBD)  
Range Hood with 12V Fan (N/A: 30PBD, 36PBD)  
Spacesaver Microwave (30PBD, 36PBD)  
25-inch Stereo Color TV with Remote in Living Area  
TV Antenna and Booster with TV Jacks  
VCR Prep with Video Switching Box  
Cable TV Hook-Up and Telephone Jacks

### OPTIONS

Large Double Door Refrigerator with Ice Maker  
Four-Door Refrigerator with Ice Maker (N/A: 29W, 30PBD, 32PBD)  
Recessed High Output Three-Burner Cooktop (w/o Oven) (Std. on 29W, 32PBD)  
Convection Microwave with Touch Control (N/A: 30PBD, 36PBD)  
Spacesaver Convection Microwave (30PBD, 36PBD)  
Stereo TV Wired through Ceiling Speakers  
13-inch Color TV with Remote in Bedroom  
AM/FM Stereo Cassette (deletes CD Player)  
VCR  
Washer/Dryer Prep with 10 Gal. Water Heater (N/A: 29W, 30PBD, 34SBD, 34PBD) (Requires 50 Amp Service Opt.)  
Vented Combination Washer/Dryer (N/A: 29W, 30PBD, 34SBD, 34PBD) (Requires Washer/Dryer Prep & 50 Amp Service Option)  
Digital Satellite System Prep  
Exterior Entertainment Center (Speakers, AM/FM Radio/CD Player)

## INTERIOR

Western Oak Cabinetry  
Raised Panel Hardwood Cabinet Doors  
Telestrut Overhead Storage Doors and Positive Catches on All Other Doors  
Low Friction Roller Drawer Guides  
Brass Finished Cabinet Hardware  
Laminate Kitchen Countertops with Stainless Steel Sink and Two Sink Covers  
Kitchen Countertop Extension (29W, 34PBD, 36PBD, 36PED)  
Kitchen Pantry with Adjustable Shelves (N/A: 29W, 30PBD)  
Booth Dinette with Drawers  
Linoleum Flooring in Kitchen (N/A: 30PBD, 36PBD)  
Nylon Carpeting in Kitchen (30PBD, 36PBD)  
Linoleum Flooring in Bathroom  
Nylon Carpeting and Pad in Living Area and Bedroom  
Padded Vinyl Ceiling  
Oak and Brass Entry Rail with Free-Standing Dinette Option  
Large Overhead Cabinets in Kitchen and Bedroom Slide-Outs  
Laminate Bathroom Countertop Bath-and-a-Half (36DBD) (Plank Floor Std. in Rear Bath)  
One-Piece Fiberglass Shower  
Glass Shower Door with Brass Frame  
Medicine Cabinet with Shelves  
Bathroom Mirror  
Towel Bars in Bathroom  
Decorative Mirror on Rear Wall (32PBD, 34PBD, 34SBD, 36PBD)  
Queen Bed  
Bedspread with Pillows  
Mini Blinds Throughout  
Party Table between Co-Pilot Seat and Barrel Chair (N/A: 29W, 30PBD, 32PBD)  
Fabric Barrel Chair (N/A: 29W, 30PBD)  
Sleeper Sofa (N/A: 32PBD, 34SBD, 36WDD, 36DBD)  
Hide-A-Bed Sofa (32PBD, 34SBD, 36WDD, 36DBD)

### OPTIONS



Autumn Haze Cabinetry  
Walnut Cabinetry  
Plank Flooring in Kitchen and Bathroom  
Day/Night Pleated Shades in Living Area  
with Black Out Shades in  
Bedroom  
Free-Standing Dinette with Two Free-  
Standing Chairs and Two Folding  
Chairs  
Bedroom Desk (32PBD, 34SBD, 36WDD)  
Twin Beds (29W)  
Fabric Sofa with Table (ILO Dinette)  
(29W, 30PBD)  
Neo-Angled Bath Tub  
(N/A: 29W, 30PBD, 32PBD, 34SBD)

### ELECTRICAL SYSTEMS AND LIGHTS

30 amp 120V Distribution Panel and  
Power Cord  
55 amp Electronic 12V Power Converter  
Onan®5.0 KW Generator  
Two 6V Deep Cycle Batteries  
Battery Disconnect Switches  
12V and 110V Outlet in Cockpit Area  
Porch Light  
Power Entry Step with Light  
Water Pump Switch in Service Area  
Lights in Outside Storage Compartment  
Patio Receptacle (Inside Compartment)  
Underhood Utility Light  
Computer Hook-Up with Phone Jack  
in Dinette Area  
Systems Control Center  
Fluorescent Ceiling Lights Throughout  
Incandescent Lights in Ceiling  
Decorative Dining Light  
Cosmetic Vanity Lights in Bathroom  
Halogen Lights Under Living Room and  
Dining Room Cabinets  
Decorative Wall Lights in Living Area  
and Bedroom

#### OPTIONS

Energy Management System with 50  
Amp Service  
50 Amp Service  
Onan®5.5 KW Generator

### PLUMBING AND LP SYSTEMS

Demand Water System and Water Pump  
6 Gal. LP Gas/Electric Water Heater with  
Electronic Ignition (DSI)  
Winterization Valving System  
Toilet with Sprayer  
No-Fuss Flush Black Holding Tank  
Rinsing System  
Insulated Systems Compartment with  
Easy Access to Hook-Up

Gravity and Pressurized Water Fill

#### OPTIONS

10 Gal. LP Gas/Electric Water Heater  
with Electronic Ignition (DSI)  
(N/A: 30PBD)  
Water Filter in Kitchen

### HEATING, VENTS, AND AIR CONDITIONING

One 13.5M BTU and One 11.0M BTU Air  
Conditioner with Ducted Air and Wall  
Thermostat (Std. in 36 models)  
One 13.5M BTU Air Conditioner with  
Ducted Air and Wall Thermostat  
(N/A: 36 Models)  
35M BTU Electronic Ignition Furnace  
(31M BTU Furnace in 29W)  
Electronic AC/Heat Climate Control  
System  
In-Floor Ducted Heating System  
12V Roof Vent in Bathroom  
Wet Bay with 12V Heater

#### OPTIONS

Dual 13.5M BTU Air Conditioner  
(requires 50 Amp Service  
option) (36 Models)  
Two Ducted Air Conditioners with  
Thermostat (One 13.5M BTU and  
One 11.0M BTU) (N/A: 29W)  
Cold Weather Package (Individual Tank  
Heating Pads)  
12V Attic Fan in Kitchen

### WINDOWS, DOORS AND AWNINGS

Radius Dual Pane Safety Glass Dark  
Tinted Slider Windows  
Radius Entrance Door with Posi-Lock  
and Clear Glass with Screen  
Door  
Entry Assist Handle  
Tinted Skylight in Bathroom  
Slide-Out Awnings  
Awning Rail

#### OPTIONS

Acrylic Patio Awning  
Automatic Patio Awning  
Window Awnings (Two on 29W)

### SAFETY

Fire Extinguisher  
Deadbolt Lock on Entrance Door  
120V GFI Protected Circuit (Kitchen,  
Bathroom, Exterior)  
LP Gas Detector  
Smoke Detector  
Carbon Monoxide Detector

Pilot and Co-Pilot Three-Point Seat Belts  
(Lap and Shoulder)  
Third Brake Safety Light  
Egress Windows

### FORD®

#### CHASSIS/ENGINE/SUSPENSION

Electronic Fuel Injected Gas Engine  
6.8L/V10  
Cubic Inch Displacement: 415"/6.8L  
4-Speed Automatic Transmission  
with Overdrive  
130 amp Alternator  
Rear Axle Ratio: 5.38:1  
Radial Tires: 245/70R/19.5F  
Leaf Spring Suspensions  
ABS Brakes  
Hitch Receiver\* with Six-Point  
Connector (5,000 lb. Hitch  
on 18,000 lb. and  
20,500 lb. GVW Chassis; 4,000 lb. Hitch  
on 22,000 lb. GVW Chassis)  
Undercoating

#### OPTIONS

Manual Hydraulic Levelers  
Stainless Steel Wheel Simulators

### WORKHORSE®

#### CHASSIS/ENGINE/SUSPENSION

Electronic Fuel Injected Gas Engine  
8.1L/V8 (7.4L/V8 on 29W)  
Cubic Inch Displacement: 496"/8.1L,  
454"/7.4L  
5-Speed Automatic Transmission with  
Overdrive (4-Speed on 7.4L)  
130 amp Alternator  
Rear Axle Ratio: 5.38:1 (4.63:1 on 7.4L)  
Radial Tires: 235/80R/22.5G (34SBD,  
34PBD, 36WDD, 36DBD),  
245/70R/19.5F (30PBD, 32PBD),  
225/70R/19.5F (29W)  
Leaf Spring Suspensions  
ABS Brakes  
Hitch Receiver\* with Six-Point  
Connector (3,000 lb. Hitch  
Receiver on 18,000 lb. GVW  
Chassis; 4,000 lb. on 22,000 lb.  
Chassis; 5,000 lb. on 20,700 lb. Chassis)  
Undercoating

#### OPTIONS

Manual Hydraulic Levelers  
Stainless Steel Wheel Simulators

*\* Your towed vehicle should be equipped  
with auxiliary brakes if the weight of the  
towed load exceeds 1,000 lbs.*



Autumn Haze Cabinetry  
Walnut Cabinetry  
Plank Flooring in Kitchen and Bathroom  
Day/Night Pleated Shades in Living Area  
with Black Out Shades in  
Bedroom  
Free-Standing Dinette with Two Free-  
Standing Chairs and Two Folding  
Chairs  
Bedroom Desk (32PBD, 34SBD, 36WDD)  
Twin Beds (29W)  
Fabric Sofa with Table (ILO Dinette)  
(29W, 30PBD)  
Neo-Angled Bath Tub  
(N/A: 29W, 30PBD, 32PBD, 34SBD)

### ELECTRICAL SYSTEMS AND LIGHTS

30 amp 120V Distribution Panel and  
Power Cord  
55 amp Electronic 12V Power Converter  
Onan®5.0 KW Generator  
Two 6V Deep Cycle Batteries  
Battery Disconnect Switches  
12V and 110V Outlet in Cockpit Area  
Porch Light  
Power Entry Step with Light  
Water Pump Switch in Service Area  
Lights in Outside Storage Compartment  
Patio Receptacle (Inside Compartment)  
Underhood Utility Light  
Computer Hook-Up with Phone Jack  
in Dinette Area  
Systems Control Center  
Fluorescent Ceiling Lights Throughout  
Incandescent Lights in Ceiling  
Decorative Dining Light  
Cosmetic Vanity Lights in Bathroom  
Halogen Lights Under Living Room and  
Dining Room Cabinets  
Decorative Wall Lights in Living Area  
and Bedroom

#### OPTIONS

Energy Management System with 50  
Amp Service  
50 Amp Service  
Onan®5.5 KW Generator

### PLUMBING AND LP SYSTEMS

Demand Water System and Water Pump  
6 Gal. LP Gas/Electric Water Heater with  
Electronic Ignition (DSI)  
Winterization Valving System  
Toilet with Sprayer  
No-Fuss Flush Black Holding Tank  
Rinsing System  
Insulated Systems Compartment with  
Easy Access to Hook-Up

Gravity and Pressurized Water Fill

#### OPTIONS

10 Gal. LP Gas/Electric Water Heater  
with Electronic Ignition (DSI)  
(N/A: 30PBD)  
Water Filter in Kitchen

### HEATING, VENTS, AND AIR CONDITIONING

One 13.5M BTU and One 11.0M BTU Air  
Conditioner with Ducted Air and Wall  
Thermostat (Std. in 36 models)  
One 13.5M BTU Air Conditioner with  
Ducted Air and Wall Thermostat  
(N/A: 36 Models)  
35M BTU Electronic Ignition Furnace  
(31M BTU Furnace in 29W)  
Electronic AC/Heat Climate Control  
System  
In-Floor Ducted Heating System  
12V Roof Vent in Bathroom  
Wet Bay with 12V Heater

#### OPTIONS

Dual 13.5M BTU Air Conditioner  
(requires 50 Amp Service  
option) (36 Models)  
Two Ducted Air Conditioners with  
Thermostat (One 13.5M BTU and  
One 11.0M BTU) (N/A: 29W)  
Cold Weather Package (Individual Tank  
Heating Pads)  
12V Attic Fan in Kitchen

### WINDOWS, DOORS AND AWNINGS

Radius Dual Pane Safety Glass Dark  
Tinted Slider Windows  
Radius Entrance Door with Posi-Lock  
and Clear Glass with Screen  
Door  
Entry Assist Handle  
Tinted Skylight in Bathroom  
Slide-Out Awnings  
Awning Rail

#### OPTIONS

Acrylic Patio Awning  
Automatic Patio Awning  
Window Awnings (Two on 29W)

### SAFETY

Fire Extinguisher  
Deadbolt Lock on Entrance Door  
120V GFI Protected Circuit (Kitchen,  
Bathroom, Exterior)  
LP Gas Detector  
Smoke Detector  
Carbon Monoxide Detector

Pilot and Co-Pilot Three-Point Seat Belts  
(Lap and Shoulder)  
Third Brake Safety Light  
Egress Windows

### FORD®

#### CHASSIS/ENGINE/SUSPENSION

Electronic Fuel Injected Gas Engine  
6.8L/V10  
Cubic Inch Displacement: 415"/6.8L  
4-Speed Automatic Transmission  
with Overdrive  
130 amp Alternator  
Rear Axle Ratio: 5.38:1  
Radial Tires: 245/70R/19.5F  
Leaf Spring Suspensions  
ABS Brakes  
Hitch Receiver\* with Six-Point  
Connector (5,000 lb. Hitch  
on 18,000 lb. and  
20,500 lb. GVW Chassis; 4,000 lb. Hitch  
on 22,000 lb. GVW Chassis)  
Undercoating

#### OPTIONS

Manual Hydraulic Levelers  
Stainless Steel Wheel Simulators

### WORKHORSE®

#### CHASSIS/ENGINE/SUSPENSION

Electronic Fuel Injected Gas Engine  
8.1L/V8 (7.4L/V8 on 29W)  
Cubic Inch Displacement: 496"/8.1L,  
454"/7.4L  
5-Speed Automatic Transmission with  
Overdrive (4-Speed on 7.4L)  
130 amp Alternator  
Rear Axle Ratio: 5.38:1 (4.63:1 on 7.4L)  
Radial Tires: 235/80R/22.5G (34SBD,  
34PBD, 36WDD, 36DBD),  
245/70R/19.5F (30PBD, 32PBD),  
225/70R/19.5F (29W)  
Leaf Spring Suspensions  
ABS Brakes  
Hitch Receiver\* with Six-Point  
Connector (3,000 lb. Hitch  
Receiver on 18,000 lb. GVW  
Chassis; 4,000 lb. on 22,000 lb.  
Chassis; 5,000 lb. on 20,700 lb. Chassis)  
Undercoating

#### OPTIONS

Manual Hydraulic Levelers  
Stainless Steel Wheel Simulators

*\* Your towed vehicle should be equipped  
with auxiliary brakes if the weight of the  
towed load exceeds 1,000 lbs.*





**FORD®CHASSIS**

	29W	30PBD	32PBD	34SBD	34PBD	36WDD	36DBD	36PBD	36PED
--	-----	-------	-------	-------	-------	-------	-------	-------	-------

**WEIGHT RATINGS (LBS.)**

Gross Vehicle	18,000	20,500	20,500	22,000	22,000	22,000	22,000	22,000	22,000
Gross Combined	23,000	25,500	25,500	26,000	26,000	26,000	26,000	26,000	26,000
Front Gross Axle	7,000	7,000	7,000	8,500	8,500	8,500	8,500	8,500	8,500
Rear Gross Axle	11,000	13,500	13,500	14,500	14,500	14,500	14,500	14,500	14,500

**WORKHORSE®CHASSIS**

**WEIGHT RATINGS (LBS.)**

Gross Vehicle	18,000	20,700	20,700	22,000	22,000	22,000	22,000	N/A	22,000
Gross Combined	21,000	25,700	25,700	26,000	26,000	26,000	26,000	N/A	26,000
Front Gross Axle	6,000	7,500	7,500	8,000	8,000	8,000	8,000	N/A	8,000
Rear Gross Axle	12,000	13,500	13,500	14,500	14,500	14,500	14,500	N/A	14,500

**MEASUREMENTS**

Wheelbase	190"	208"	208"	228"	228"	228"	238"	228"	228"
Overall Length	29' 10"	30' 8"	32' 8"	34' 10"	34' 10"	36' 6"	36' 6"	36' 6"	36' 6"
Overall Height* – Ford	11' 8"	11' 8"	11' 8"	11' 8"	11' 8"	11' 8"	11' 8"	11' 8"	11' 8"
Overall Height* – Workhorse	11' 8"	11' 8"	11' 8"	12' 0"	12' 0"	12' 0"	12' 0"	12' 0"	12' 0"
Interior Height	78"	78"	78"	78"	78"	78"	78"	78"	78"
Interior Width	94.5"	94.5"	94.5"	94.5"	94.5"	94.5"	94.5"	94.5"	94.5"
Exterior Width	100.5"	100.5"	100.5"	100.5"	100.5"	100.5"	100.5"	100.5"	100.5"

\* with A/C

**TANK CAPACITY (GAL.)** All tank capacities are approximate. Actual "usable capacity" may vary as a result of variances in installation and fabrication.

Water Heater	6	6	6	6	6	6	6	6	6
Gray Tank	42	42	42	42	42	42	42/40	42	42
Black Tank	42	42	42	42	42	42	42/39	42	42
Fresh Tank	70	67	67	67	67	55	55	67	67
LP Tank*	33	33	33	33	33	33	33	33	33
Fuel Tank	75/60 on 7.4L	75	75	75	75	75	75	75	75

\* Actual filled LP capacity is 80% of listing due to safety shut-off required on tank.





	29W	30PBD	32PBD	34SBD	34PBD	36WDD	36DBD	36PBD	36PED
<b>FORD® CHASSIS</b>									
<b>WEIGHT RATINGS (LBS.)</b>									
Gross Vehicle	18,000	20,500	20,500	22,000	22,000	22,000	22,000	22,000	22,000
Gross Combined	23,000	25,500	25,500	26,000	26,000	26,000	26,000	26,000	26,000
Front Gross Axle	7,000	7,000	7,000	8,500	8,500	8,500	8,500	8,500	8,500
Rear Gross Axle	11,000	13,500	13,500	14,500	14,500	14,500	14,500	14,500	14,500

<b>WORKHORSE® CHASSIS</b>									
<b>WEIGHT RATINGS (LBS.)</b>									
Gross Vehicle	18,000	20,700	20,700	22,000	22,000	22,000	22,000	N/A	22,000
Gross Combined	21,000	25,700	25,700	26,000	26,000	26,000	26,000	N/A	26,000
Front Gross Axle	6,000	7,500	7,500	8,000	8,000	8,000	8,000	N/A	8,000
Rear Gross Axle	12,000	13,500	13,500	14,500	14,500	14,500	14,500	N/A	14,500

<b>MEASUREMENTS</b>									
Wheelbase	190"	208"	208"	228"	228"	228"	238"	228"	228"
Overall Length	29' 10"	30' 8"	32' 8"	34' 10"	34' 10"	36' 6"	36' 6"	36' 6"	36' 6"
Overall Height* - Ford	11' 8"	11' 8"	11' 8"	11' 8"	11' 8"	11' 8"	11' 8"	11' 8"	11' 8"
Overall Height* - Workhorse	11' 8"	11' 8"	11' 8"	12' 0"	12' 0"	12' 0"	12' 0"	12' 0"	12' 0"
Interior Height	78"	78"	78"	78"	78"	78"	78"	78"	78"
Interior Width	94.5"	94.5"	94.5"	94.5"	94.5"	94.5"	94.5"	94.5"	94.5"
Exterior Width	100.5"	100.5"	100.5"	100.5"	100.5"	100.5"	100.5"	100.5"	100.5"
* with A/C									

**TANK CAPACITY (GAL.)** All tank capacities are approximate. Actual "usable capacity" may vary as a result of variances in installation and fabrication.

Water Heater	6	6	6	6	6	6	6	6	6
Gray Tank	42	42	42	42	42	42	42/40	42	42
Black Tank	42	42	42	42	42	42	42/39	42	42
Fresh Tank	70	67	67	67	67	55	55	67	67
LP Tank*	33	33	33	33	33	33	33	33	33
Fuel Tank	75/60 on 7.4L	75	75	75	75	75	75	75	75

\* Actual filled LP capacity is 80% of listing due to safety shut-off required on tank.



# Choose

the details

It's time to select some of your own details. It's time to be picky. Our designers have carefully appointed the Monarch models to provide an array of styles, colors and fabrics. Now it's up to you. Select from the options before you and hit the road in style today. Consider the possibilities and choose your details.

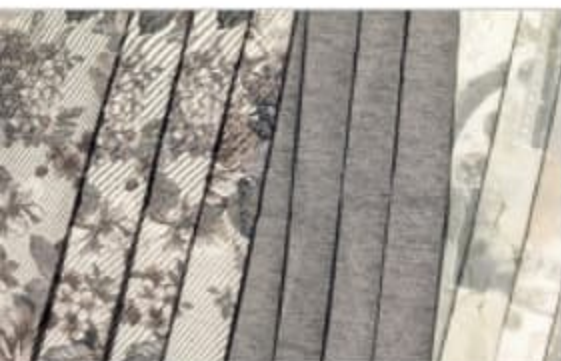
7



**Crown Jewel**



**Meadow**



**Greystone**

**A** Sofa   **B** Chair   **C** Bedspread

**Note:** While the color of the motorhome's exterior and the interior fabrics shown in this sales brochure are fair and reasonable depictions, they may not be an exact match of the actual colors. Due to product improvements, changes during the model year and/or transcription errors that may occur, information presented within this brochure may not be accurate at the time of your purchase. If certain information is significant to your purchasing decision, please confirm the information with your dealer prior to submitting your order.



# Choose

the details

It's time to select some of your own details. It's time to be picky. Our designers have carefully appointed the Monarch models to provide an array of styles, colors and fabrics. Now it's up to you. Select from the options before you and hit the road in style today. Consider the possibilities and choose your details.

7



**Crown Jewel**



**Meadow**



**Greystone**

**A** Sofa   **B** Chair   **C** Bedspread

**Note:** While the color of the motorhome's exterior and the interior fabrics shown in this sales brochure are fair and reasonable depictions, they may not be an exact match of the actual colors. Due to product improvements, changes during the model year and/or transcription errors that may occur, information presented within this brochure may not be accurate at the time of your purchase. If certain information is significant to your purchasing decision, please confirm the information with your dealer prior to submitting your order.



# Floorplans

LINOLEUM

CARPET

29W



30PBD



32PBD



34SBD





# Floorplans

LINOLEUM

CARPET

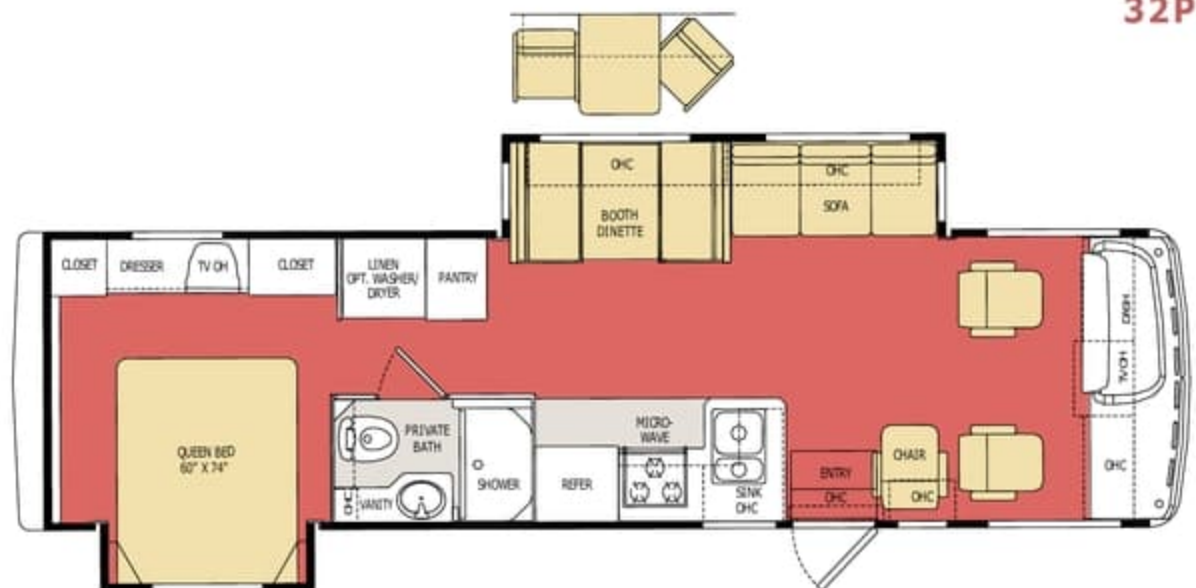
29W



30PBD



32PBD



34SBD

